

# 3M™ DI-NOCT™ AE-2162MT WASHED CONCRETE MATTE



Product Family: Earth and Stone

Product Use: Architectural Finishes

Roll Width: 1220 mm (48 inches)

Roll Length: 50,000 mm (50 metres)

Thickness: 8 mils (200 microns) some designs vary slightly in thickness due to embossing

Weight: 0.035 per square foot

Content: Vinyl

Backing: Acrylic pressure sensitive adhesive, permanent

Release Liner: Silicone-coated poly paper

Cleaning: 70/30 IPA (70% Isopropyl alcohol/30% water)

Flammability: CAN/ULC-S102.2 (all finishes)

VOC Emission Testing: CA specification 01350 tested per CDPH standard method V1.1 and V1.2 compliant as low-emitting

Wear Resistance: 7,000 taber cycles

Application Surface Type: Smooth, hard, non-porous (sealed) material

Application Location: Interior

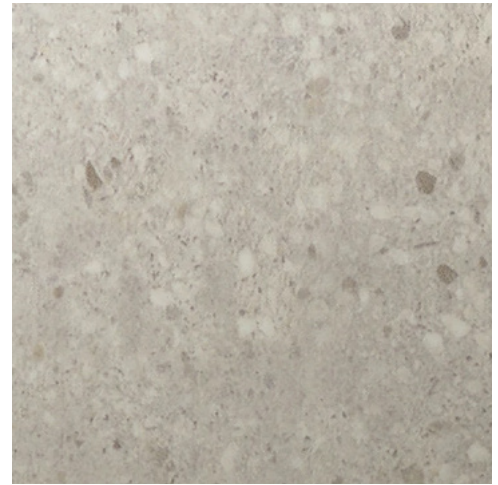
Materials Reuse: Product can be used to refinish salvaged, refurbished, or reused materials and furniture

Application Temperature: (12°C - 38°C) air and application surface

Application Method: Dry application

Warranty: 10 years

Origin: Japan



Product may vary in color, texture, finish and scale

[Product Characteristics](#)

[Product Performance](#)

[Stain Resistance](#)

[Resistance to Solvents, Cleaners and other Chemicals](#)

[Cleaning and Maintenance](#)

[Application and Removal](#)

[Adhesion Compatibility with Application Surfaces](#)